

Celebrating 35 Years of Impact



C|C Cumberland Community
F| Foundation, Inc.



Board President, Jim Konneker

At the heart of every community foundation are its people. We are honored to serve both donors who want to change Cumberland County for the better and the community organizations that make it happen. We are constantly reminded that people with passion for this community are our greatest strength.

In this report you will learn more about your community foundation and its impact over the last 35 years of grantmaking. Since inception, individuals and businesses in this community have donated \$90.4 million to Cumberland Community Foundation. These donors have made it possible to pay out \$44.7 million in grants and scholarships while growing to over \$70 million in assets. You will read more about our work to grow sustainable support for local community organizations through designated endowments. And, you will see examples of donors who are making a difference in their own, very personal ways.

As we celebrate our successes, we know there is so much more we can do together. We look forward to serving you and achieving our mission in the years ahead.

*Giving together to enhance the quality
and spirit of community life.*

In 1980, Dr. Lucile Hutaff, a Fayetteville native, made a choice that continues to benefit our community today. She created the Community Endowment Fund and founded Cumberland Community Foundation with a gift of \$576,840. Over the years, her fund has supported a wide range of community needs – a park renovation, a new botanical garden, a pharmacy for the uninsured, a museum exhibit, and summer programs for thousands of children. Because Dr. Hutaff chose to endow her gift, she has enabled more than \$1.5 million in grants to go to her community – almost three times the impact she would have made by giving the original gift to charity all at once.

Cumberland County will be forever grateful for the vision and dedication of Dr. Lucile Hutaff, for her gift of the Cumberland Community Foundation and for leading the way by example. Other citizens of Cumberland County have followed her lead by entrusting charitable dollars with CCF. Investing in our community's progress today brings benefits today, tomorrow and forever.



Founder, Dr. Lucile West Hutaff

What is Cumberland Community Foundation?

Cumberland Community Foundation (CCF) is a tax-exempt public charity founded in 1980, created by and for the people of Cumberland County, NC and the surrounding areas. Since the beginning, we have been helping people establish charitable funds to make life better in the community they love. We work with individuals, families, financial advisors and nonprofits. We can help you, too.

Our goal is simple: to strengthen our community and improve the quality of life for all residents in and around Cumberland County, NC.

We accomplish our work in several ways:

WE HELP YOU FULFILL YOUR CHARITABLE VISION

CCF makes it easy for donors from all walks of life and with all levels of assets to fulfill their charitable goals. We offer personalized service, local knowledge and expert giving advice. You can choose to give to an existing fund or establish one of your own. We make grants from these funds that improve the quality of life in our community – handling all the administrative and legal requirements to make your giving easier and more fulfilling.

WE CREATE PERMANENT COMMUNITY RESOURCES

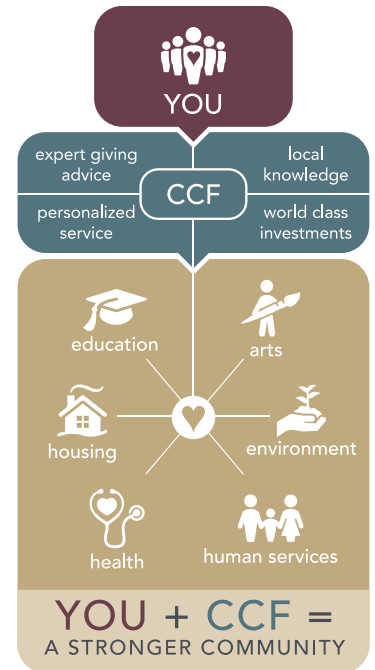
CCF creates permanent endowments to meet long-term community needs. We invest your gifts so they grow and maximize the resources available to address community needs within the charitable purpose you design. Our goal is to ensure there will always be resources available to address community needs in the future.

WE PROVIDE VISION AND LEADERSHIP TO TACKLE COMMUNITY ISSUES

CCF goes beyond simply making grants that advance charitable activities. We identify current and emerging community issues, develop and channel resources to address them, and help prepare the community for the future – bringing together people, ideas, partners, and funding.

WE STRENGTHEN NONPROFIT GROUPS

Strong nonprofits are vital to the health of our community. Ensuring the stability of our local nonprofits is essential to our mission. You can support and preserve your favorite charity through a nonprofit endowment with a gift of any size. An endowment generates support for the cause every year without additional solicitation and thus stabilizes the nonprofit organization's operations. CCF also strengthens nonprofits by offering training and programs for the development of nonprofit staff and volunteers.



Sandra (Sandy) Monroe
Board member and
fund founder

“The community foundation makes life better for everyone. I’m interested in supporting seniors, healthcare, human service, and education, and I can easily support them all through CCF.”

Sandra (Sandy) Monroe

35 Years in Review

Giving together to enhance the quality and spirit of community life.

Total gifts received \$90,408,335

32,314 individual gifts

605 funds established

\$69,288,941 in total assets

15,216 grants and scholarships awarded

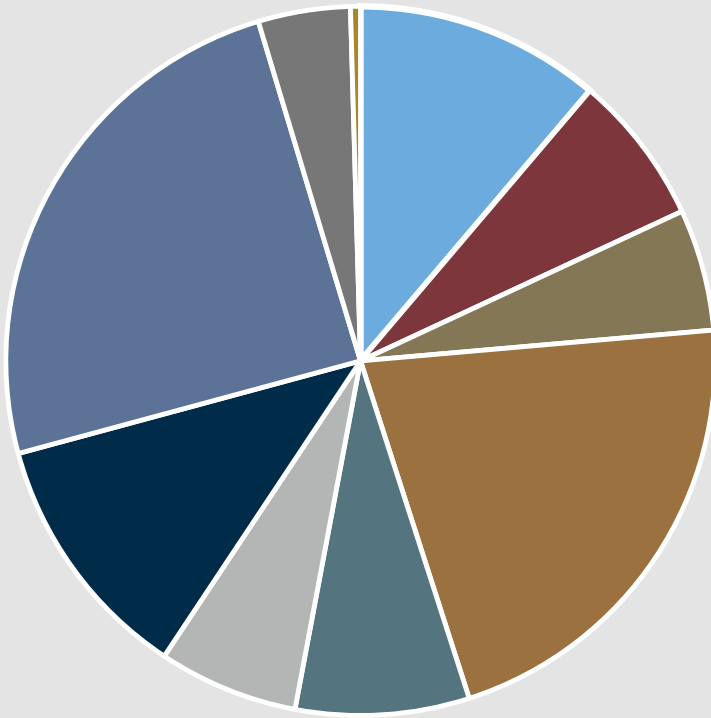
Over \$44.7 million in grants and scholarships awarded



Every summer over 1,000 children attend camps supported by the Summertime Kids Program.

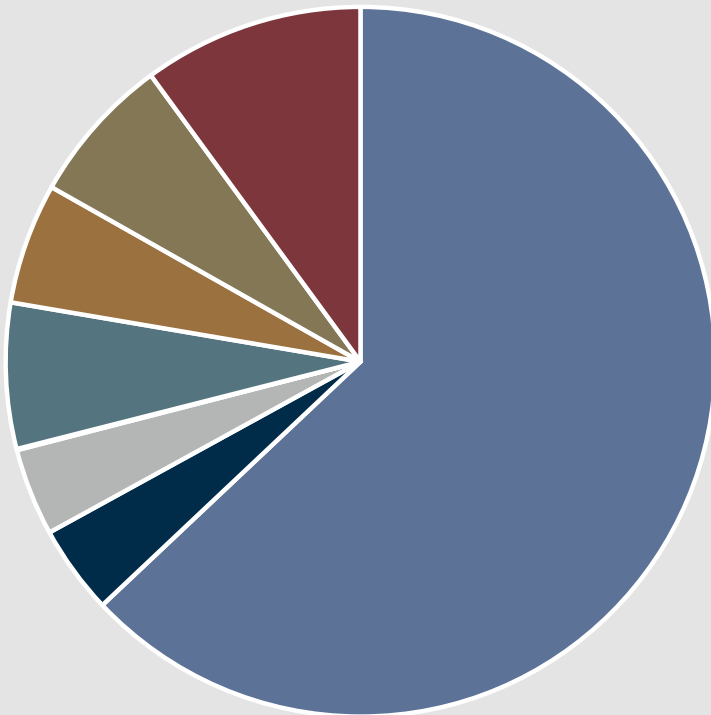
© Photo by Thomas Keever

35 Years of Grantmaking



15,216 Grants Awarded

Arts, Culture and Recreation.....	5,010,455
Children & Youth.....	3,066,407
Civic & Community	2,477,945
Education	9,578,439
Environment.....	3,540,507
Health.....	2,850,108
Human Services.....	5,121,825
Religion	10,974,535
Scholarships	1,877,924
Other.....	202,416
Total.....	\$44,700,560



Grants by Fund Type

Donor Advised	28,145,709
Designated.....	1,807,907
Field of Interest.....	1,778,672
Agency	2,990,128
Special Project	2,462,201
Scholarship.....	3,020,603
Unrestricted	4,495,339
Total.....	\$44,700,560

Community Impact



CCF provided start-up funding for the Fayetteville Symphony Youth Orchestra



Daphne Manning (L) and Carol Short (R) presented a check from the Women's Giving Circle to Kellie Tomita for the Cumberland County Public Library

CCF is making an impact through grantmaking in seven strategic areas:

- Improving Quality of Life for All
- Strengthening Local Nonprofit Organizations
- Increasing College Access and Affordability
- Building Philanthropy By and For Women
- Growing Sustainable Support for Local Nonprofit Organizations
- Improving Education Outcomes
- Growing Local Giving

View our entire Grant Impact Report available by mail or on our website. For information on how to apply for a grant from CCF, please visit the Grants section of our website or attend the next Grant Information Meeting.

Board Member Lucy Jones presented a scholarship to Ja'Keel M. Flowers and his mother



Board Member Beth Keeney participated in a donor site visit to Second Harvest Food Bank



Nonprofit Services

Representatives from the Vision Resource Center, Cape Fear Regional Theatre, Fayetteville Symphony Orchestra, Sandhills Area Land Trust, and Better Health of Cumberland County attended a training about endowments.



CCF offers free training for the volunteers and staff members of local nonprofit organizations. Training topics include: Endowment Building, Planned Giving, Board Development, Nonprofit Governance, Legal Updates, Fundraising, Communications, and more. Training is free but registration is required. Visit our website for more information.

Nonprofit organizations are invited to attend one of our Grant Information Meetings. A Grant Information Meeting is an opportunity for you to learn more about CCF, including funding and services available to nonprofit organizations. Invitations to register and attend are emailed. Registration is required. Please call to be added to our email list.



Representatives of the Airborne & Special Operations Museum Foundation attended training about planned giving (L-R: Jim Soffe, Paul Galloway, Henry Holt)

Our Milestones

Getting Started and Building the Board

- Dr. Lucile West Hutaff created CCF in July 1980 with an endowment gift of \$576,840
- CCF operated as an all-volunteer foundation (1980 - 1990)
- First year of grantmaking, 1982, CCF announced \$74,044 in grants to local nonprofits
- CCF purchased the site for the main library in downtown Fayetteville and made grants for building assistance (1983 - 1987)
- Professional consultants provided guidance on how to grow the foundation
- An anonymous benefactor sent the entire board of directors to the national conference for community foundations to learn how to help the foundation reach its potential (1988)
- The newly invigorated board began to grow the foundation (1988)

Growing the Foundation and Infrastructure

- The first executive director was hired - Aline Lambert joined CCF from the Arizona Community Foundation as Executive Director (1990)
- CCF adopted an Investment Policy Statement and Endowment Spending Policy for sound investment oversight and endowment management
- CCF standardized fund agreements and other procedures necessary to function in perpetuity
- A strategic campaign to raise unrestricted grantmaking endowments called "Family Funds" began as a way to honor the legacy of a donor's family (1990 - 1996)
- Mary Holmes joined the staff as the second executive director (1997)
- A goal to reach \$20 million in assets by the year 2000 was set in 1997 and reached in 2001

1980

1985

1990

1995

CCF Board Presidents



JOHN E. RAPER JR.
1981-1988



ROBERT O. MCCOY JR.
1988-1989



MARY LYNN BRYAN
1990-1993
2001-2002



ROBERT G. RAY
1994-1995



WALTER C. MOORMAN
1995-1998



ALFRED E. CLEVELAND
1998-1999



JOHN T. HENLEY
1999-2001

Our Milestones

Growing Grantmaking

- CCF assets grew to \$28 million by 2006 and growth in the foundation's grants program naturally followed
- In the years that followed, CCF continued to grow its grantmaking to include the annual Summertime Kids Program, a Scholarship Awards Program, The Lilly Endowment Challenge Program and annual Community Grants for a variety of local nonprofit organizations
- CCF's strong internal capacity allowed the Foundation to begin hosting pass-through fundraising efforts for local causes like Freedom Memorial Park, Tsunami Relief, Cross Creek Cemetery, Sandhills State Veterans Cemetery, Fayetteville Beautiful, One Million Pounds for Second Harvest Food Bank, and more
- CCF began hosting two giving circles (2006), the EE Smith Academic Excellence Giving Circle and the Women's Giving Circle of Cumberland County

Growing Nonprofit Endowments

- In 2010 the CCF board examined the greatest needs in the community and adopted a development plan to grow CCF assets to \$100 million, including endowments specifically for our nonprofit partners by \$20 million
- As of 2016, CCF manages 137 endowments for nonprofit organizations
- CCF received its largest gift to date in 2011, \$10 million from the estate of Robert H. Short, for scholarships
- CCF adopted a new Mission Statement (2014): Giving together to enhance the quality and spirit of community life
- The Foundation increased free training and support to nonprofits to build endowments for their agencies
- CCF is working with donors to help them support their favorite organizations with designated endowments

2000

2005

2010

2015

CCF Board Presidents



RAMON L. YARBOROUGH
2002-2003



LESLIE A. GRIFFIN
2003-2005



ROBERT W. DRAKE
2005-2007



SAMUEL E. SHORT
2007-2009



LOLETA WOOD FOSTER
2009-2011



O. RAYMOND MANNING JR.
2011-2013



S. LYNN LEGATSKI
2013-2015

Nonprofit organizations with designated or agency funds at CCF

- Action Pathways, Inc./Second Harvest Food Bank Southeast NC
 Airborne and Special Operations Museum Foundation
 American Friends Service Committee
 Antioch Christian Academy
 Arthur Morgan School
 The Arts Council of Fayetteville/Cumberland County, Inc.
 Attica Community Foundation c/o Western Indiana Community
 Foundation
 Autism Society of Cumberland County
 Beth Israel Congregation, Inc.
 Better Health of Cumberland County, Inc.
 Beulah United Methodist Church
 Boy Scouts of America Troop #747
 Boys and Girls Clubs of Cumberland County, Inc.
 Cape Fear Botanical Garden
 Cape Fear Regional Theatre at Fayetteville, Inc.
 The CARE Clinic, Inc.
 Carolina College of Biblical Studies
 The Carter Center, Inc.
 Catholic Charities of the Diocese of Raleigh, Inc./Fayetteville Office
 CBM Ministries
 CCMSA - Health Education Foundation
 Center for Economic Empowerment & Development
 Child Advocacy Center, Inc.
 Citizens for Global Solutions Education Fund
 City of Fayetteville
 Communities In Schools of Cumberland County
 Community Concerts of Fayetteville
 CONTACT of Fayetteville Inc., Crisis Helpline
 Culbreth Memorial United Methodist Church
 Cumberland Community Foundation, Inc.
 Cumberland County Schools
 CCS - Cape Fear High School
 CCS - District 7 Elementary
 CCS - E.E. Smith High School
 CCS - Ferguson-Easley Elementary
 CCS - Walker-Spivey School
 Cumberland Oratorio Singers
 Davis-Putter Scholarship Fund
 Earthjustice
 Family Promise of Fayetteville, NC
 The Fayetteville Academy
 Fayetteville Animal Protection Society, Inc.
 Fayetteville Area Cultural and Educational Foundation, Inc.
 Fayetteville Area Habitat for Humanity
 Fayetteville Family Life Center, Inc.
 Fayetteville State University
 Fayetteville Symphony Orchestra, Inc.
 Fayetteville Technical Community College Foundation, Inc.
 Fayetteville Urban Ministry, Inc.
 Fellowship of Reconciliation
 First Baptist Church
 First Christian Church
 Fort Bragg Fisher House
 Foundation Fighting Blindness
 Friends Committee on National Legislation Education Fund
 Friends General Conference
 Friends Journal
 Friends of the Cumberland County Public Library, Inc.
 Galatia Presbyterian Church
 The Gilbert Theater
 Great Oak Youth Development Center
 Grinnell College
 Guilford College
 Heritage Square Historical Society of North Carolina, Inc.
 Highland Presbyterian Church
 Hindu Bhavan
 Historic Fayetteville Foundation, Inc.
 Junior League of Fayetteville NC, Inc.
 Masonic and Eastern Star Home of N.C., Inc.
 Masonic Home for Children at Oxford
 Mayo Clinic
 Methodist University
 Museum of the Cape Fear Historical Complex
 Myover-Reese Fellowship Homes, Inc.
 Natural Resources Defense Council
 NC State Engineering Foundation, Inc.
 North Carolina Symphony / Cumberland County Chapter
 North Carolina Symphony Society, Inc.
 Northwood Temple Church
 Operation Inasmuch/Fayetteville Area
 Parkinson's Disease Foundation
 Partnership for Children of Cumberland County, Inc.
 Peace Action Education Fund
 Pendle Hill School
 ProLiteracy Worldwide
 Quaker Earthcare Witness
 Quaker House of Fayetteville
 Quaker United Nations Office
 Rape Crisis Volunteers of Cumberland County
 Rockfish Camp & Retreat Center
 Salvation Army - Fayetteville Corps
 Sandhills Area Land Trust, Inc.
 Scattergood Friends School
 Smile Train, Inc.
 Snyder Memorial Baptist Church
 Southern Environmental Law Center
 Southern Poverty Law Center
 St. Andrews University
 St. John's Episcopal Church
 St. Patrick Church
 St. Patrick School
 Town of Eastover
 Town of Falcon
 Town of Godwin
 Town of Hope Mills
 Town of Linden
 Town of Spring Lake
 Tranters Creek Church of Christ
 UNC Press
 Union County Historical Society, Inc.
 Union of Concerned Scientists
 United States Servas, Inc.
 United Way of Cumberland County
 Vision Resource Center
 World Wildlife Fund, Inc.
 YMCA of Fayetteville NC, Inc.
 Youth For Christ USA, Inc. Fayetteville Area

What is the 2020 Vision Strategy?

CCF is dedicated to helping donors support their favorite causes forever. The Foundation is here to help individuals, families, and organizations create and grow endowments for charitable organizations.



Example Designated Fund:

Elaine Bryant Hayes established the Highland Presbyterian Church Endowment for the Chancel Choir to support her choir forever.

Anyone can give to this fund to support the HPC choir forever.

Donor Stories

THE HUMPHREY FAMILY

The Cole Humphrey Memorial Endowment is a designated fund created in loving memory of Cole Humphrey who was a standout baseball and football player for Cape Fear High School. The fund was created by his family to benefit Cape Fear High School to support its athletic programs every year, with emphasis on football and baseball, and to support its students.

"We wanted to do something for the Cape Fear community in memory of Cole but we didn't know how. The community foundation helped us move forward."

— Larry Ellis, grandfather of Cole Humphrey



MILDRED BRAXTON

Mildred Braxton is a retired educator who has been supporting education and programs for youth through Cumberland Community Foundation since 1999. She has contributed time, talent and treasure to many efforts led by CCF.

"I believe in helping children have a better life. I have thoroughly enjoyed working with CCF and I know that a positive difference has been made with the people and projects I support." — Mildred Braxton, retired educator

BOBBY MCCOY

Robert O. McCoy, Jr. (Bobby) lived a life of dedication to his family, friends, and community, which he avidly supported through Cumberland Community Foundation. He was a tireless leader and established a charitable legacy by naming CCF as the beneficiary of a life insurance policy. This generous addition to the **Robert O. and Mary Ann E. McCoy Family Fund** will have a lasting impact on ever-changing needs in the community as the fund contributes to the foundation's unrestricted grantmaking.



THE SLEHRIA FAMILY

The Slehria family is passionate about many causes and they are active volunteers in numerous organizations. They support their favorite causes through the **Dr. Sanjeev and Seema Slehria Advised Fund** including the local Hindu temple, local and national charities serving children, and charities promoting health and basic human needs.

LEON AND JUDY SHACKLEFORD

Leon and Judy Shackelford are thoughtful donors and strong advocates for a variety of causes. One of the many ways they give back to their community is through their donor advised fund. In addition, they have established the **Leon & Judy Shackelford Charitable Remainder Unitrust** at CCF which pays them income during their life, and the remainder will create an endowment in their name to support the greatest needs in the community, forever.



Types of Funds

NONPROFIT ENDOWMENT FUNDS

YOU CAN SUPPORT
your most cherished towns,
schools, and nonprofits,
here or anywhere in the country

You can support and preserve your favorite charity through a nonprofit endowment at Cumberland Community Foundation with a gift of any size.

Nonprofit endowment funds are established for the benefit of the nonprofit organization, or educational or religious institution of your choice. With a nonprofit endowment fund at Cumberland Community Foundation, you can direct the annual grants from that fund to that organization alone. Individual donors or nonprofits themselves may establish these funds to benefit one, or more, specific charities or organizations now and in the future.

A field of interest fund allows you to direct your gift to an area of need or interest you care about, whether it's fostering the arts, providing support to low-income families, preserving the environment or any other worthwhile cause.

Field of interest funds are flexible enough to fund a variety of recipients and yet focused enough to create a highly personal and permanent charitable legacy. We honor your wishes forever by working with you to establish the criteria and a process for competitive grantmaking. CCF invests the funds and provides all necessary legal and record-keeping services.

COMMUNITY FUNDS: Field of Interest or Unrestricted

YOU CAN ADDRESS
emerging community needs or issues
in your area of interest

SCHOLARSHIP FUNDS

YOU CAN CHANGE
the life of a student

Higher education has long been seen as one of the surest paths to increased opportunity. Unfortunately, many people who could benefit the most from a college education are least able to afford it. Scholarship funds can help these students on their path to higher education.

CCF is the region's largest provider of scholarships and has helped hundreds of students from all walks of life attain the goal of a college education and, in some cases, a graduate degree. Your fund can help propel promising students toward academic and professional success.

Donor-advised funds are a simple, powerful, and a highly personal approach to giving. A donor advised fund at Cumberland Community Foundation is simple to establish and operate, allowing you to easily manage your giving without the burden of running a private foundation. CCF handles all the investment, administrative and grantmaking work and complies with IRS guidelines.

Establishing a donor-advised fund allows you to make a gift to Cumberland Community Foundation, then remain actively involved in suggesting uses for your gift.

DONOR ADVISED FUNDS

YOU CAN
achieve your giving goals

Thank you to our administrative supporters

One hundred percent of every gift goes directly into a charitable fund of the donor's choice. How is that possible? Cumberland Community Foundation is very fortunate to have our administrative expenses covered from diverse sources – grants from administrative endowment funds (listed below), interest on short-term assets, and service fee income. Thank you to our administrative endowment funds:

Administrative Endowment Fund (est. 1994)

Alfred E. and Janie Cleveland Family Fund (est. 1995)

Education for Community Foundation Growth Fund (est. 1994)

The Fayetteville Observer Administrative Fund (est. 1993)

Julian B. Hutaff Memorial Fund (est. 1992)

J. Wes and Lucy Jones Family Fund (est. 1992)

The Manning Family Fund for CCF Sustainability (est. 2012)

Donald W. and Kathryn McCoy Family Fund (est. 1995)

Robert O. and Mary Ann E. McCoy Family Fund (est. 1993)

Thomas R. and Elizabeth McLean Fund (est. 1993)

vonRosenberg Family Fund (est. 1993)

Justin and Dorothy White Family Fund (est. 1993)



CCF Treasurer Kelly Puryear, CPA
TRP CPAs, PLLC



Excellence. Accountability. Impact.™

*Confirmed in Compliance with
National Standards
for U.S. Community Foundations*

As a public charity, Cumberland Community Foundation takes its obligation to operate in the public view and the public interest very seriously.

For a copy of the audit by Haigh, Byrd & Lambert LLP, call the Foundation at 910-483-4449 or visit our website.

Past Board Members

John S. Ayers
Ervin I. Baer (1929-2004)
Dr. Kamal M. Bakri
Dan T. Barker* (1921-2010)
Reginald M. Barton, Jr.
Dr. John K. Bergland
Mildred M. Braxton
Nancy Broadwell
Mary Lynn Bryan
Dr. James E. Carson
Anthony G. Chavonne
J. Gary Ciccone
Anthony M. Cimaglia
Dr. Franklin S. Clark III*
Alfred E. Cleveland
Margaret H. Dickson
Robert W. Drake
William H. Dudley
Paul Eaglin
Naoma W. Ellison
Eleanor W. Fleishman
Dr. Loleta Wood Foster
Ashton L. Fox
Dr. John R. Griffin, Jr.
Leslie A. Griffin
James S. Harper (1923-2008)
Elaine M. Bryant Hayes
John "Mac" Healy
Dr. John T. Henley, Jr.
Joseph H. Hollinshed (1934-2014)
Dell Kistler Hollstein*
Charles B. C. Holt (1933-2011)
Henry G. Hutaff

Dr. J. Wesley Jones
Dr. William R. Jordan (1941-2014)
Ashton W. Lilly* (1908-2000)
Dr. A. A. Markley*
Ron Matthews
Lonnie J. McAllister, Jr.
Robert O. McCoy, Jr.* (1928-2011)
R. Williford McCauley
J. Scott McFadyen, Jr. (1929-2014)
Thomas R. McLean (1919-1998)
Samuel H. Mearns
Walter C. Moorman
Dr. Ruby S. Murchison
Ellen K. Parker
Richard L. Player, Jr. (1934-2015)
Donald L. Porter
Peggy Powers (1929-2010)
John E. Raper, Jr.*
Robert G. Ray
Barbara B. Richardson
Joel Schur
Samuel E. Short
Iris M. Thornton
Dr. Ronald B. Tucker (1943-1999)
Terri Union
Charles H. vonRosenberg (1914-2005)
Thomas W. Williams, Jr.
Dr. Eugene E. Wright, Jr.
Dorothy B. Wyatt
Ramon L. Yarborough
Virginia L. Yarborough

*Founding Board Members
As of July 1, 2016

Current Board Members as of July 1, 2016

Ellenor T. Barker
Cathy J. Blackwell
Jesse H. Byrd, Jr.
Libby Stanfield Daniel
Bruce G. Dantzer
Dr. Rakesh Gupta
Lucy H. Jones
Elizabeth Marler Keeney
James R. Konneker
S. Lynn Legatski
O. Raymond Manning, Jr.
Gen. (R) Dan K. McNeill
Sandra W. Monroe
Kelly D. Puryear
Emily K. Schaefer
Gail A. Riddle
Seema Slehria
Ole M. Sorensen
Myrtle Alston Summers
Lockett Tally
Eva C. Williams

CCF Staff L-R: Susan Barnes, Scholarships & Women's Giving Circle; Mary Holmes, Executive Director; Robin DePew, Office & Buildings Manager; Marie Milton, Bookkeeper; Kimmi Nettles, Grants Program Assistant; Soula Bantsolas, Communications & Donor Services Manager; Mary Anne Brooks, Chief Financial Officer; Darryl Childers, Community Relations Manager



Giving together to enhance the quality and spirit of community life.



Cumberland Community Foundation, Inc.

*For more information on
how you can make a difference,
please contact us.*

PHYSICAL ADDRESS:

308 Green Street, Fayetteville, NC 28301
Parking and entrance in back.

MAILING ADDRESS:

P.O. Box 2345, Fayetteville, NC 28302

910.483.4449 phone

910.483.2905 fax

www.cumberlandcf.org



Like us on Facebook



Excellence. Accountability. Impact.™

Confirmed in Compliance with National Standards
for U.S. Community Foundations